



primary care
collaborative

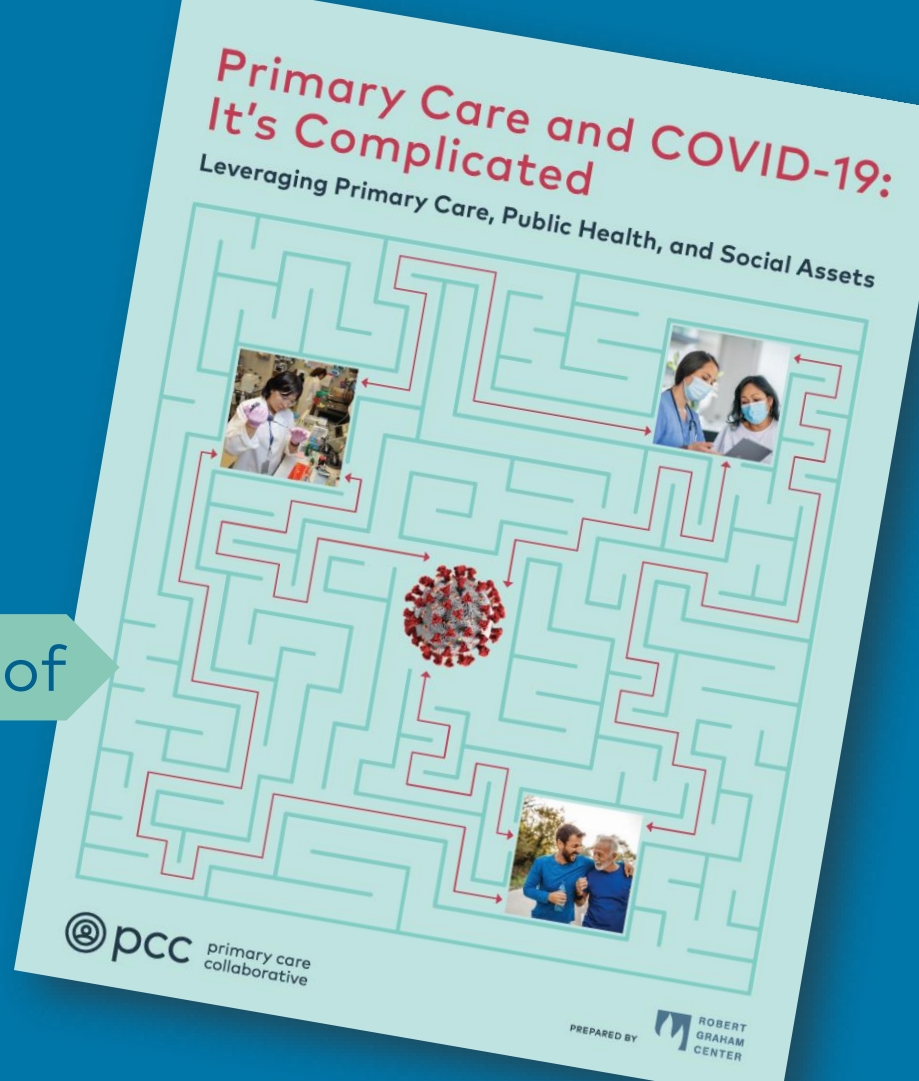
Convening + Uniting + Transforming



ROBERT
GRAHAM
CENTER

WELCOME to the RELEASE of

Monday, October 18, 2021
10:00 a.m. ET



Primary Care and COVID-19: It's Complicated

Leveraging Primary Care, Public Health, and Social Assets

@pcc primary care
collaborative

PREPARED BY
ROBERT
GRAHAM
CENTER

Where can I get the report?

bit.ly/2021EvidenceRpt



01 Welcome and introduction

Mark Del Monte, JD | CEO/Executive Vice President, American Academy of Pediatrics

02 Report briefing

Yalda Jabbarpour, MD | Medical Director, Robert Graham Center

03 Panelist presentations

- **A. Seiji Hayashi, MD, MPH, FAAFP** | Chief Transformation Officer and Medical Director, Mary's Center
- **Glen Mays, PhD, MPH** | Professor, Chair, Department of Health Systems, Management & Policy, Colorado School of Public Health
- **Sinsi Hernández-Cancio, JD** | Vice President for Health Justice, National Partnership for Women and Families

04 Discussion among panelists

Moderated by Ann Greiner, MCP | President & Chief Executive Officer, Primary Care Collaborative

05 Audience Q&A

Report briefing

Yalda Jabbarpour, MD

Medical Director, Robert Graham Center

Special Thanks

CO-AUTHORS

- Anuradha Jetty, MPH
- John M. Westfall, MD, MPH
- Ann Greiner, MCP

REVIEWERS

- Sanjay Basu MD, PhD
- Monica O'Reilly-Jacob, PhD, FNP
- Maret Felzien

CONTRIBUTORS

- Ann Kempinski, MILR
- Stephen H. Padre
- Morgan Bailie



KGUN 9 | ON YOUR SIDE

COVID-19 IN INTENSIVE CARE UNITS

ARIZONA DOCTOR: DEATHS PRIMARILY IN ICU

6:31

51



PANIC!!!

EMERGENCY

EMERGENCY WALK

EMERGENCY

RONALD O. PERELMAN
Center for Emergency Services

KIDS Emergency Care

PATIENT DROP OFF
HERE

3837

NYU Langone Health

EMERGENCY MEDICINE

3844

NYU Langone Health

EMERGENCY MEDICINE

3845

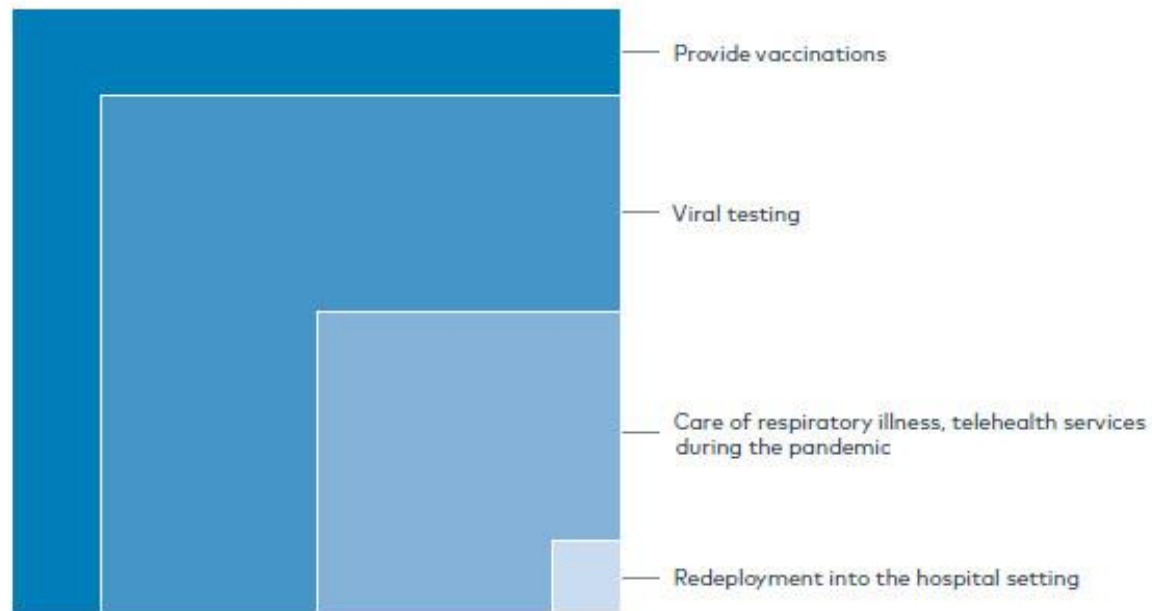
NYU Langone Health

EMERGENCY MEDICINE



FIGURE 2.2

Ecology of Care and COVID-19—Primary Care's Role



Study Overview and Methods

- Created a measure of primary care, public health preparedness and social assets called the “Community Health Index” (CHI)
- Compared CHI with three COVID-19 outcomes:
 - Vaccination rates by county
 - COVID 19 cases by county (before and after vaccination) - per 100,000 population
 - COVID 19 deaths by county (before and after vaccination) - per 100,000 population

Community Health Index

- Primary Care – 1-10
 - Supply rates from American Medical Association Masterfile
- Public Health- 1-10
 - Public Health Preparedness from the National Health Security Preparedness Index
- Social Assets- 1-10
 - Social Deprivation Index from the American Communities Survey

20% of the population lives in the lowest CHI counties
17% of the population lives in the highest CHI counties

FIGURE 2.3

Community Health Index Distribution by County

3-9 10-13 14-17 18-21 22-30

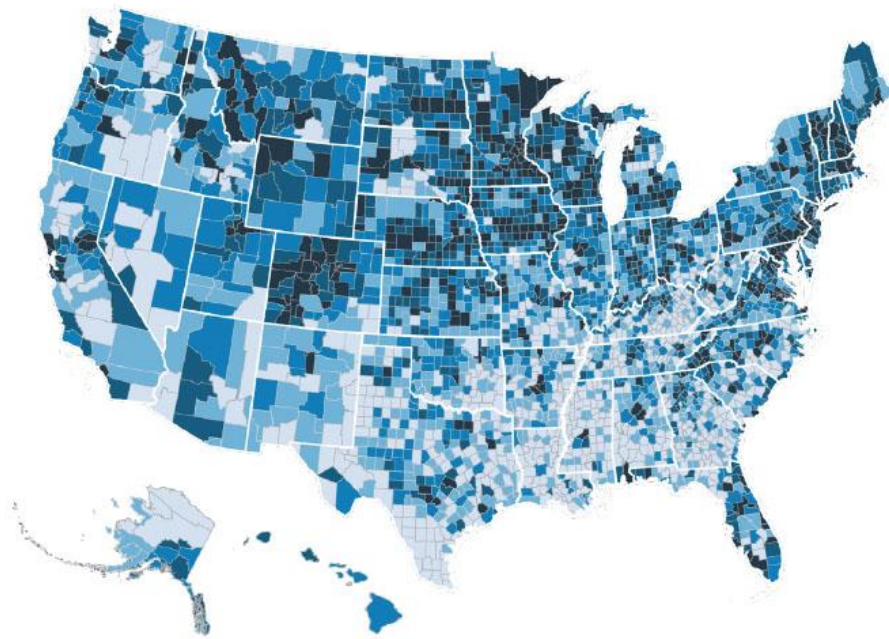
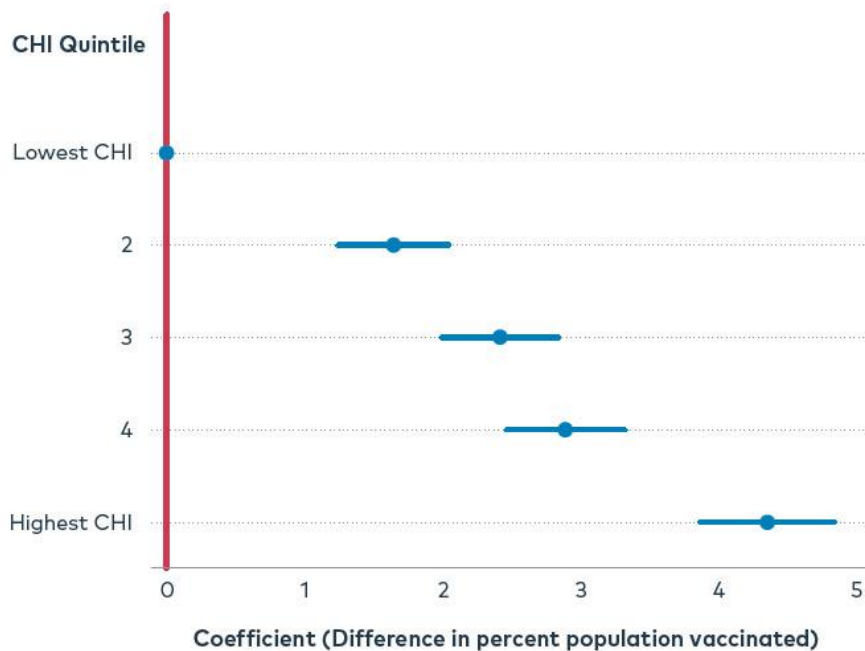


FIGURE 2.4

Percentage of the Adult Population (18+) who Received COVID-19 Vaccinations*



* Adjusted for county-level percentage of rural, Black, and Hispanic populations

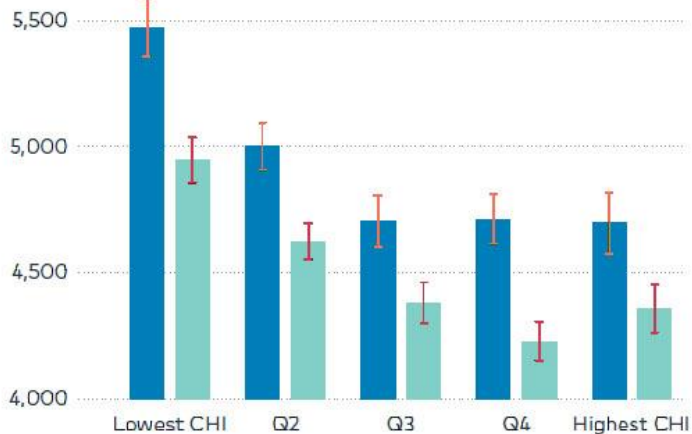
Source: Authors' analysis of Community Health Index, derived from the American Medical Association Physician Masterfile 2020; American Community Survey 2014-2018 5-year Summary File; National Health Security Preparedness Index 2020; Centers for Disease Control and Prevention COVID-19 County Vaccination Data, April 21, 2021).

FIGURE 2.5

Number of COVID-19 Cases per 100,000 Population Before and After Date of Vaccination Commencement (Dec. 14, 2020)*

■ Before ■ After

Number of Cases



* Adjusted for county-level percentage of rural, Black, and Hispanic populations

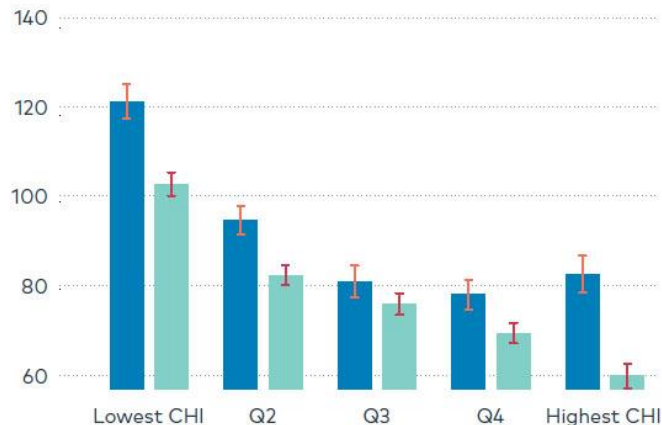
Source: Authors' analysis of the Community Health Index, derived from the American Medical Association Physician Masterfile 2020; American Community Survey 2014-2018 5-year Summary File; National Health Security Preparedness Index 2020; USA Facts/Johns Hopkins Coronavirus Resource Center COVID-19 data (April 15, 2021).

FIGURE 2.6

Number of Deaths per 100,000 Before and After the Date of Vaccination Commencement (Dec. 14, 2020)*

■ Before ■ After

Number of Deaths



* Adjusted for county-level percentage of rural, Black, and Hispanic populations

Source: American Medical Association Physician Masterfile 2020; American Community Survey 2014-2018 5-year Summary File; National Health Security Preparedness Index 2020; USA Facts/Johns Hopkins Coronavirus Resource Center COVID-19 data (April 15, 2021).

Limitations

- Could not control for certain county-level characteristics
 - Testing rates
 - Mask mandates
 - Social distancing or stay-at-home orders
- There are sub-county variations that we couldn't control for
- Could not control for all individual-level variables
- Includes COVID-19 data only up until April 19, 2021
- Our data did not measure the interaction between the three components of the CHI

Conclusions

- Counties in the top quintile (17% of the country) had high scores on primary care, public health and social assets. It was not one alone!
- Higher CHI is associated with higher vaccination rates
- COVID-19 case rates and death rates decreased after vaccination in every county regardless of CHI
- Counties with the highest CHI had 12% lower COVID-19 case rates and 42% lower COVID-19 death rates than counties in the lowest CHI

Take-Home Message

Leveraging primary care, public health,
and social assets
was essential to the response and
recovery of COVID-19

Thank you!

yjabbarpour@aafp.org

www.graham-center.org

Introduction of Panelists

A. Seiji Hayashi, MD, MPH, FAAFP

Chief Transformation Officer and Medical Director, Mary's Center

Glen Mays, PhD, MPH

Professor, Chair, Department of Health Systems, Management & Policy, Colorado School of Public Health

Sinsi Hernández-Cancio, JD

Vice President for Health Justice, National Partnership for Women and Families

Discussion moderated by

Ann Greiner, MCP

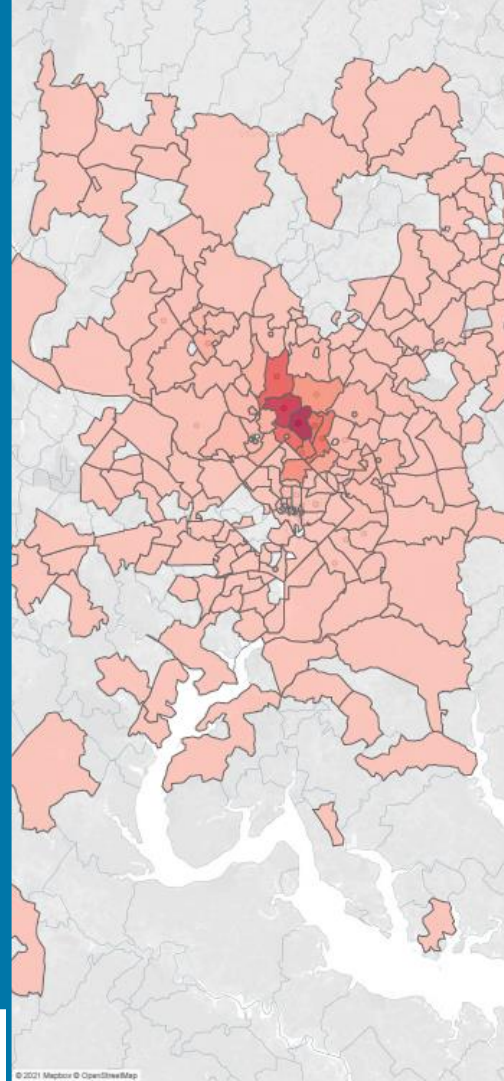
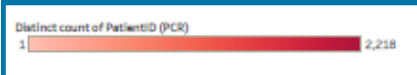
President & Chief Executive Officer, Primary Care Collaborative

Testing and Positivity

% OF TESTS BY RESULT



Testing and Patient ZIP Code





Panel Discussion



Q&A