

COVID-19 PRIMARY CARE SURVEY

WEEK 6 - April 17 -20 2020

PRACTICES REPORTING



89% of clinicians report large decreases in patient volume

57% say that less than half of their visits in the last week were reimbursable



42% note the need to layoff or furlough practice members as a stress on their practice

LOST EMPLOYMENT

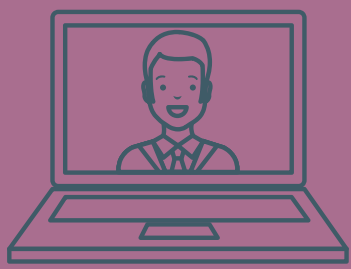
One fifth of respondents report a “shockingly high increase” in the past week among patients who have lost employment, and 36% report a “meaningful increase” among that same group.



ELDERLY SUPPORT

A third of respondents report either a “shockingly high increase” (10%) or a “meaningful increase” (24%) in COVID-related health burden among elderly patients without home support.

VIDEO TELEHEALTH INCREASES



Video telehealth is increasing, but is still far from ubiquitous. A majority of respondents are using video for less than 20% of their visits (43%) or not at all (14%). Instead, forty-four percent of respondents are using telephone for the majority of their visits.

CAPACITY FOR COVID-19 TESTING

