



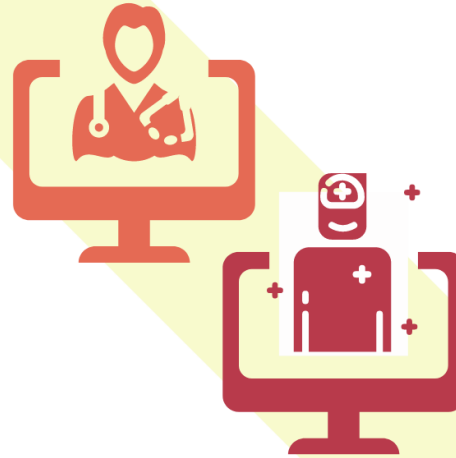
**pcc** primary care  
collaborative

Convening + Uniting + Transforming

February webinar

Thursday, February 24  
2:00 to 3:00 p.m. ET

# HOW CAN **TELEHEALTH** SUPPORT INTEGRATED **MIND-BODY CARE?**





MODERATOR



MARY T.  
GILIBERTI, JD

Chief Public Policy  
Officer,  
Mental Health  
America

## 01 Announcements and introductions

## 02 Presentations

- **Benjamin Miller, PsyD** | Well Being Trust
- **William Beecroft, MD, DLFAPA** | Blue Cross and Blue Shield of Michigan
- **Kim Coleman, MD** | United Physicians, Southeast Michigan

## 03 Panel Discussion

Moderated by **Mary Giliberti, JD** | Mental Health America

## 04 Audience Q&A



# Panelists

## PANELISTS



**KIM COLEMAN,  
MD**

Chief Medical  
Officer,  
United  
Physicians,  
Bingham Farms,  
Michigan



**WILLIAM  
BEECROFT, MD,  
DLFAPA**

Medical Director,  
Behavioral  
Health, Blue  
Cross and Blue  
Shield of  
Michigan



**BENJAMIN  
MILLER, PsyD**

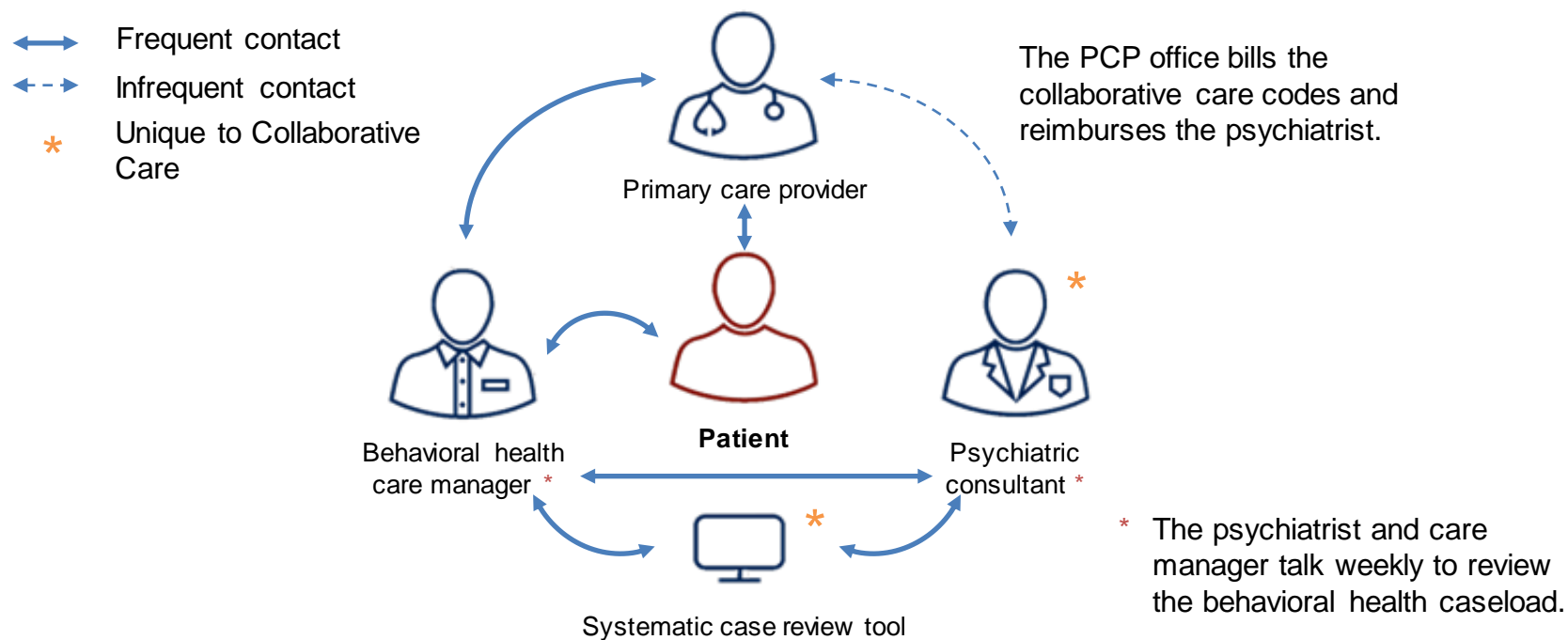
President, Well  
Being Trust

# Behavioral Health Collaborative Care Integration Adult and Adolescent

**William Beecroft, M.D., D.L.F.A.P.A.**  
Medical Director  
Behavioral Health Strategy and Planning

# What is the Collaborative Care Model?

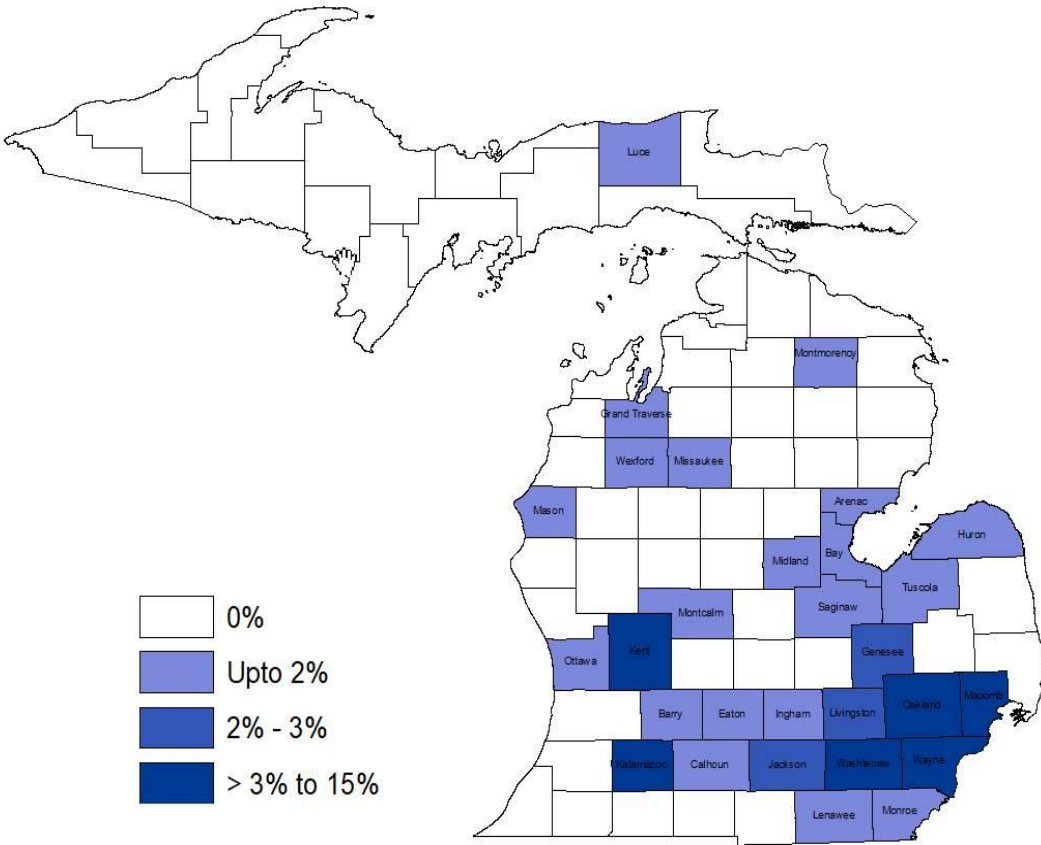
The Collaborative Care Model **delivers behavioral health care in a primary care setting**, expanding the primary care team with a behavioral health care manager and a consulting psychiatrist.



In 2014, The Milliman report was published and pointed to significant medical cost savings through effective adoption of **integrated care**

- **14%** of people with insurance were receiving treatment for mental health or substance use disorder
  - This group accounted for more than **30%** of the total health care spend
  - Of which behavioral health spend was approximately **35%**

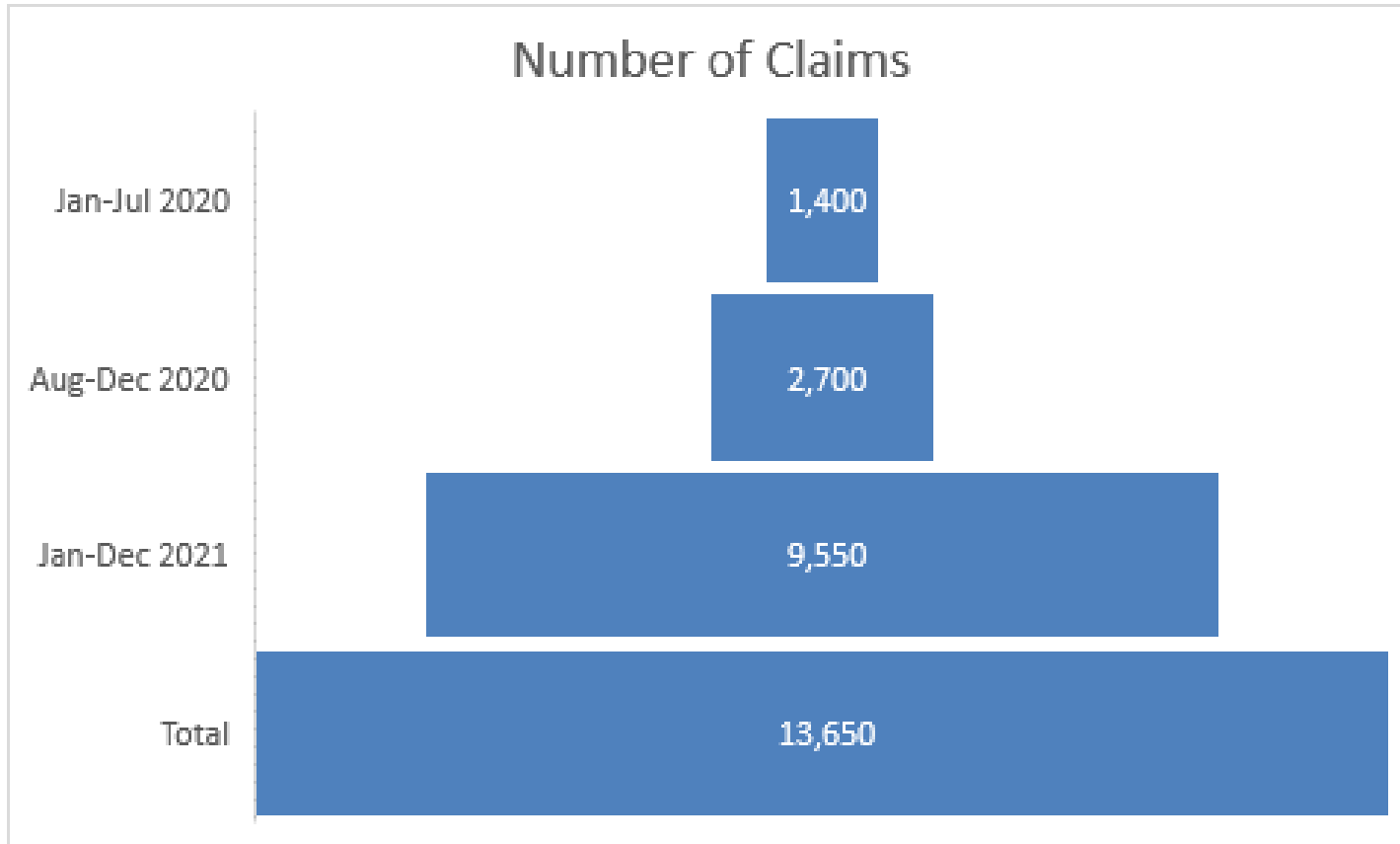
- General medical costs for treating people with chronic medical illness as well as **mental health conditions were 2-3 times higher** than those for treating people with physical health conditions only
- Most of the projected reduced spending is associated with facility, hospital and ED utilization



- 84 new practices began delivering CoCM in 2021.
- Total to date: ~180 practices trained and delivering CoCM.
  - Represents 590 individual providers
- Launched CoCM for Adolescents pilot in September 2021.
  - 18 practices trained in 2021 with more scheduled in 2022
- CoCM value-based reimbursement started 9/1/2021 for ~800 PCPs.
- Ongoing practice support and educational webinars.

### Designation program in 2022

- 138 practices nominated for CoCM designation currently



We began our training and support delivery in August 2020

**Total claims 13,650 representing ~4,500 unique members!**



1. Code configuration
2. reimbursement
3. copays
4. Funding for education and practice transformation
5. Inertia
6. Current practitioner burnout
7. Patient registry/technology/integration
8. Case managers and psychiatric consultants with appropriate skillset

There are solutions to each of these issues both locally and centrally

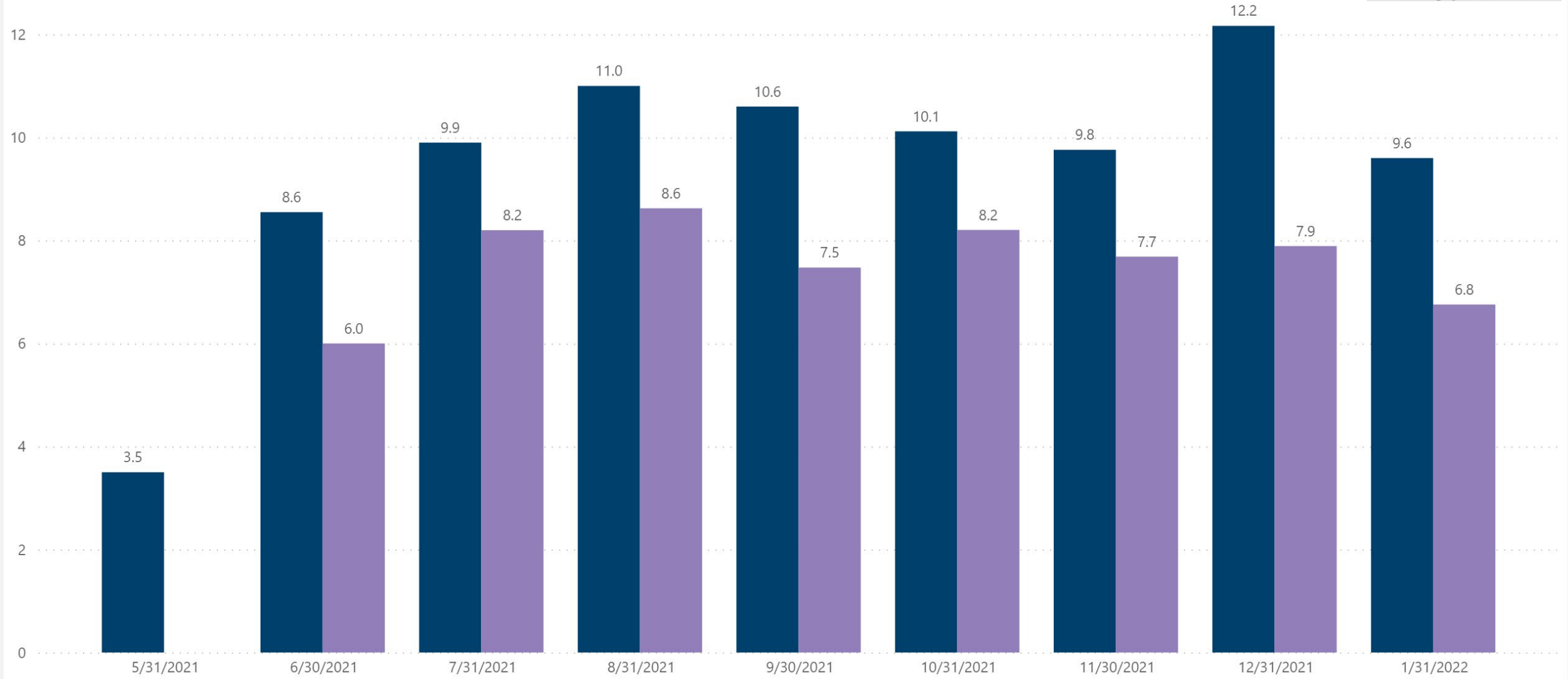
# United Physicians-Array Telebehavioral Health CoCM Outcomes

February 2022



Average PHQ Score by Date of Latest PHQ

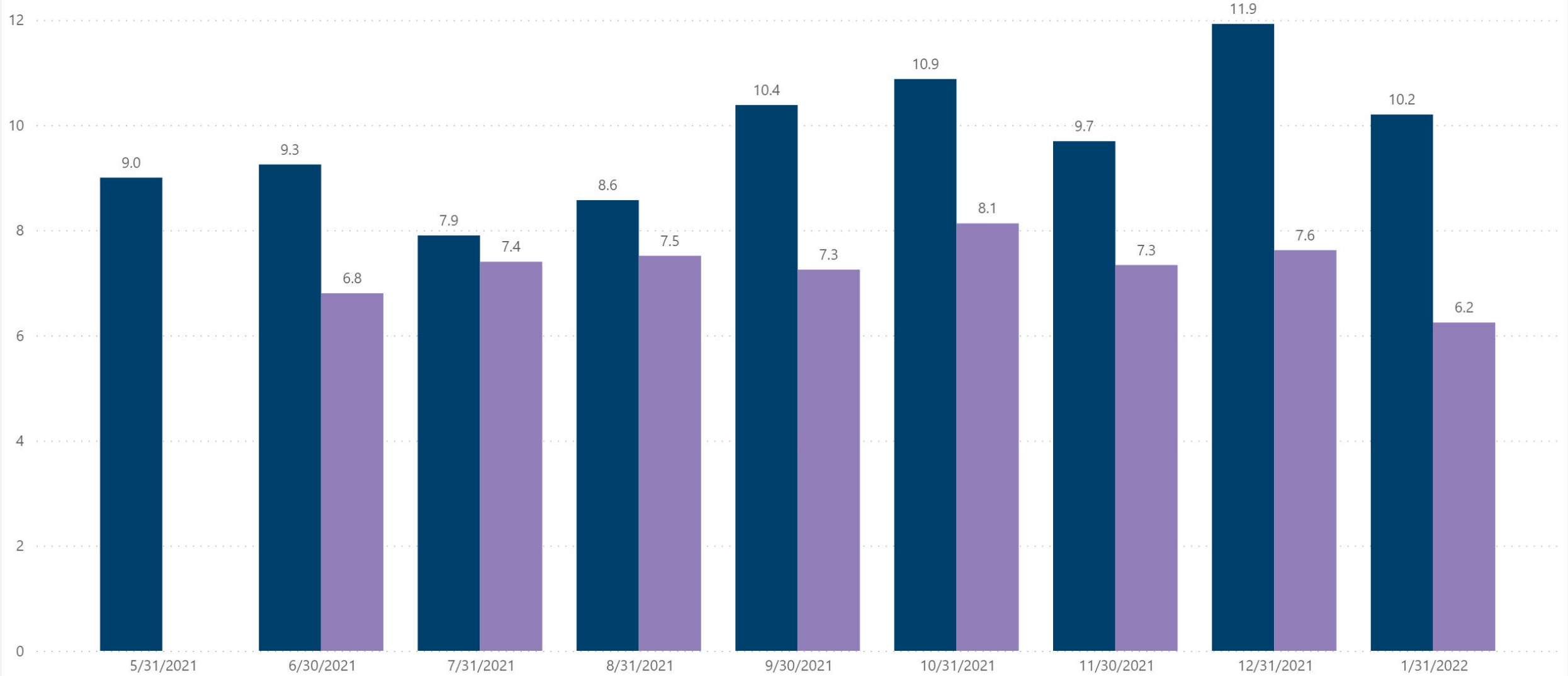
● Average of First PHQ Scores at EOM ● Average of Latest PHQ Scores at EOM





### Average GAD by Date of Latest GAD Score

● Average of First GAD Scores at EOM ● Average of Latest GAD Scores at EOM





# Panel Discussion

## PANELISTS



**KIM COLEMAN,  
MD**

Chief Medical  
Officer,  
United  
Physicians,  
Bingham Farms,  
Michigan



**WILLIAM  
BEECROFT, MD,  
DLFAPA**

Medical Director,  
Behavioral  
Health, Blue  
Cross and Blue  
Shield of  
Michigan



**BENJAMIN  
MILLER, PsyD**

President, Well  
Being Trust



**MARY T.  
GILIBERTI, JD**

Chief Public Policy  
Officer,  
Mental Health  
America

## MODERATOR



# Q&A